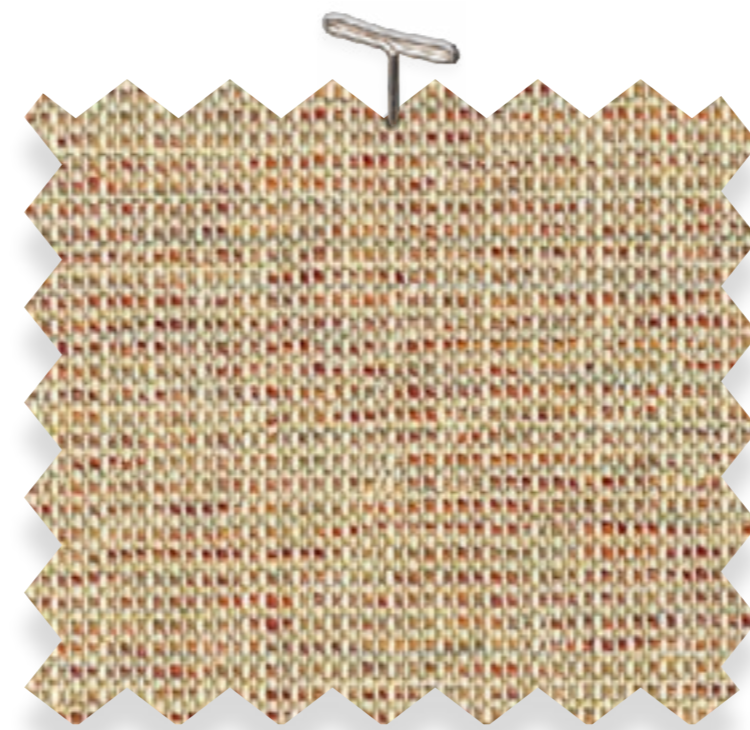
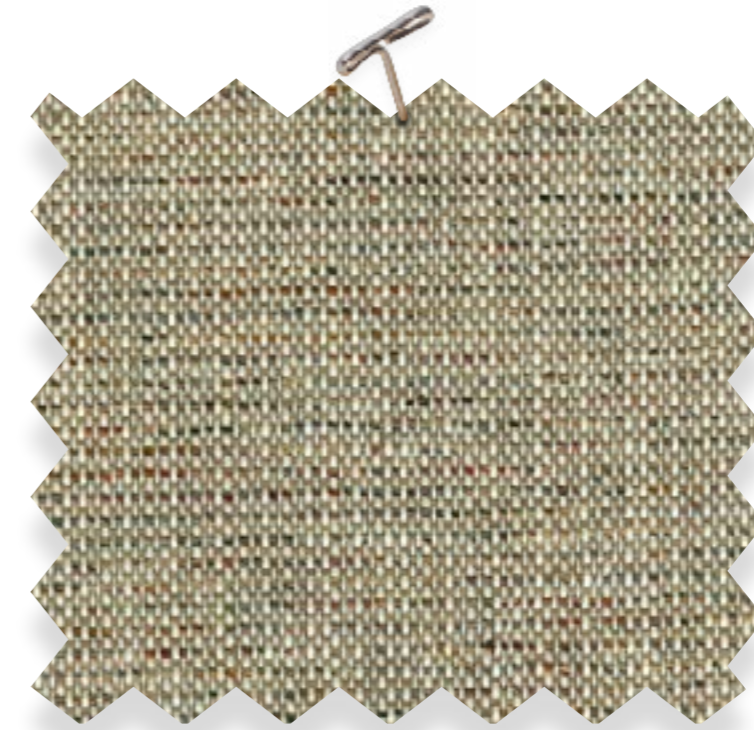




ROVER



45 Marmalade



66 Rattan



15 Biscotti



24 Chambray



10 Artifact



33 Checkmate



51 Parchment

SPECS & INFO



ROVER

Specifications

Content 59% Olefin | 39% Cotton | 2% Polyester

Width 54"

Origin USA

Repeat None

Finish Permanent Soil/Stain Protection

Performance Characteristics



Abrasion Resistance	50,000 Double Rubs	ASTM D4157-13
Colorfastness To Light	Class 4 @ 40 Hours	AATCC 16
Crocking Resistance	Wet: Grade 3 Dry: Grade 4	AATCC 8
Pilling	Class 4	ASTM D3511
Seam Slippage	Warp: 25 lbs. Weft: 28 lbs.	ASTM D4034
Breaking Strength	Warp: 199 lbs. Weft: 67 lbs.	ASTM D5034

Applications

Upholstery, Indoor

Product Notes

- Prop 65 Compliant
- California AB-2998 Compliant

Flammability

- CA Technical Bulletin 117-2013
- NFPA 260

For additional product information including detailed cleaning instructions visit our website, [unitedfabrics.com](https://www.unitedfabrics.com)